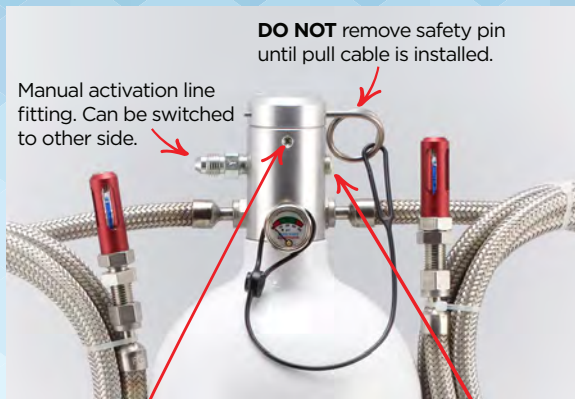


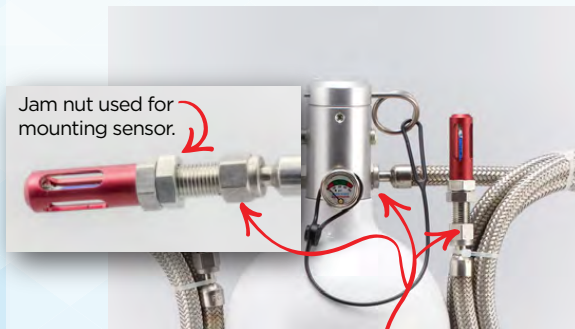
Model AT10JHK & AT10JHG Installation Guidelines

The Model AT10JHK / AT10JHG is a dual zone automatic system with a manual backup or additional zone discharge feature. No operator action is required for the automatic portion of the system. A pull cable is used to activate the manual feature.

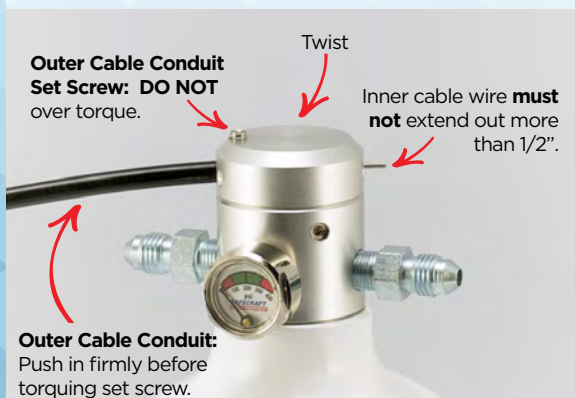


Cable Head Set Screw:
Loosen to rotate top of discharge head.

Remove plug and install fitting to use second discharge port.



DO NOT loosen any host fittings. Fittings may be in different location than shown.



Cylinder Mounting

We recommend the extinguisher be mounted vertically with the head up. The extinguisher is designed to be operational in any position when activated. Observe temperature limits on the label. Mount so you can see the gauge and label. Tech inspectors like to verify the gauge readings and service info on the label. Typically, the cylinder is mounted away from the area to be protected and the discharge line is run to the area to be protected.

Automatic Discharge Line and Fittings

The discharge line of the Model AT is an all-metal welded hose assembly that is pressurized along with the cylinder. All of the fittings are either Swagelok or Duolok style fittings that provide a leak-tight seal. **DO NOT** loosen any of the fittings or the extinguisher will lose pressure.

Automatic Sensor

The sensor is a thermal sensor with a red guard. The color of the internal glass bulb indicates the temperature at which the extinguisher will activate. A jam nut is provided on the sensor for mounting.

Mount Brackets

Billet aluminum mount brackets are included with systems that are ordered with brackets.

Pull Cable Activation

The pull cable is used to keep the spring loaded plunger in the "cocked" position. This must be in place or the extinguisher will discharge. The hole in which the inner cable passes through is tight, so the inner cable can be a little hard to get through. To install the pull cable, we suggest a minimum 12" bend radius for the cable. If you use the cable, as supplied, sand or file the end of the inner cable to a smooth, blunt end before inserting it through the head. If you need to shorten the cable, remove the inner cable from the outer cable conduit. Install the outer cable and secure it. It can be cut with a pair of heavy wire cutters. Ensure the inner cable runs through it smoothly. Install the inner cable through the conduit to the head of the extinguisher. We suggest the inner cable **NOT** extend out of the head more than 1/2". Ensure the cut end is free from burrs. We suggest that you sand or file a smooth blunt end on the inner cable.





www.safecraft.com

Fire
Suppression
Systems

